



MetLife named to Working Mother "100 Best Companies" List for 19th Year in a Row

MetLife has earned a spot on the 2017 Working Mother magazine's "100 Best Companies" list for outstanding leadership in programs, policies and a culture that supports working families.

[See more...](#)

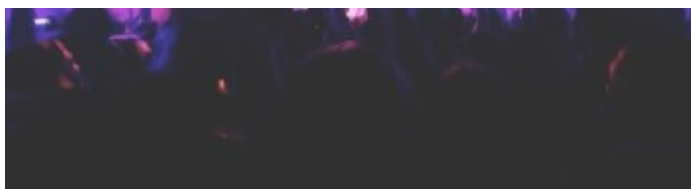


Meeting a mentor when you most need one

There are some people who you'll never forget the day you met because that's the day your life changed. For 1998 MDRT President Gene L. Mahn, CLU, ChFC, that was the day he met his mentor, Millard J. Grauer, CLU, ChFC, of Evanston, Illinois. Grauer later became MDRT President in 1980.

[See more...](#)





Las Vegas attack prompts surge in terror insurance for concerts

Due to the recent string of deadly attacks at music events – most recently the shooting that occurred in Las Vegas – more artists are now considering the need for terrorism insurance. Typical nonperformance insurance policies cost roughly 2% of the artist's guarantee. The policies pay for claims on canceled events and as much as 80% of appearance fees for reasons such as illness, injury, or natural disaster.

[See more...](#)



Kyriakos Chatzistefanou

Life Insurance Advisor at MetLife,
MDRT Country Chair for Greece 2016-2018

+30 6977 66 7600 (m)

+30 2310 240603 (w)

+30 2310 226004 (f)



Large parts of Australia could become 'uninsurable,' climate expert warns

A climate expert has warned that large parts of Australia could become uninsurable if nothing is done to address climate change. General insurance companies face a range of potential reputational and financial risks.

[See more...](#)



[Website](#) [Twitter](#) [LinkedIn](#) [Facebook](#) [Blog](#)

Marinou Antypa 42, Mail Box 4110, Thessaloniki, Pylaia 57001, Greece

To no longer receive emails from this sender, [click here](#)

Member of Successful Agents in MetLife | Diploma in Management Studies from Kingston University & Chartered Management Institute | 2013-14 & 2016-17 MDRT Country Chair Greece